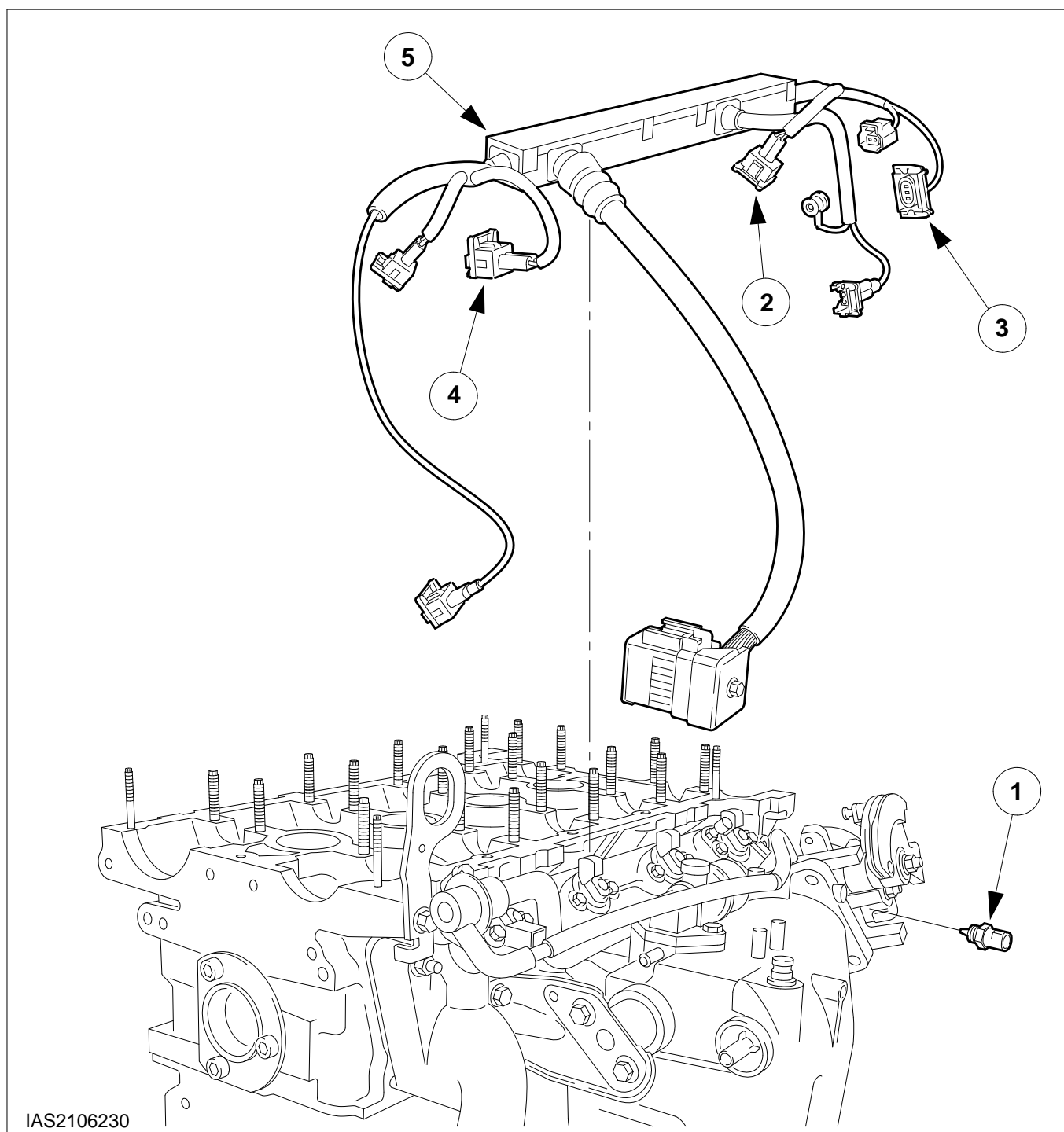


Cylinder Head – Renew (21 165 6)

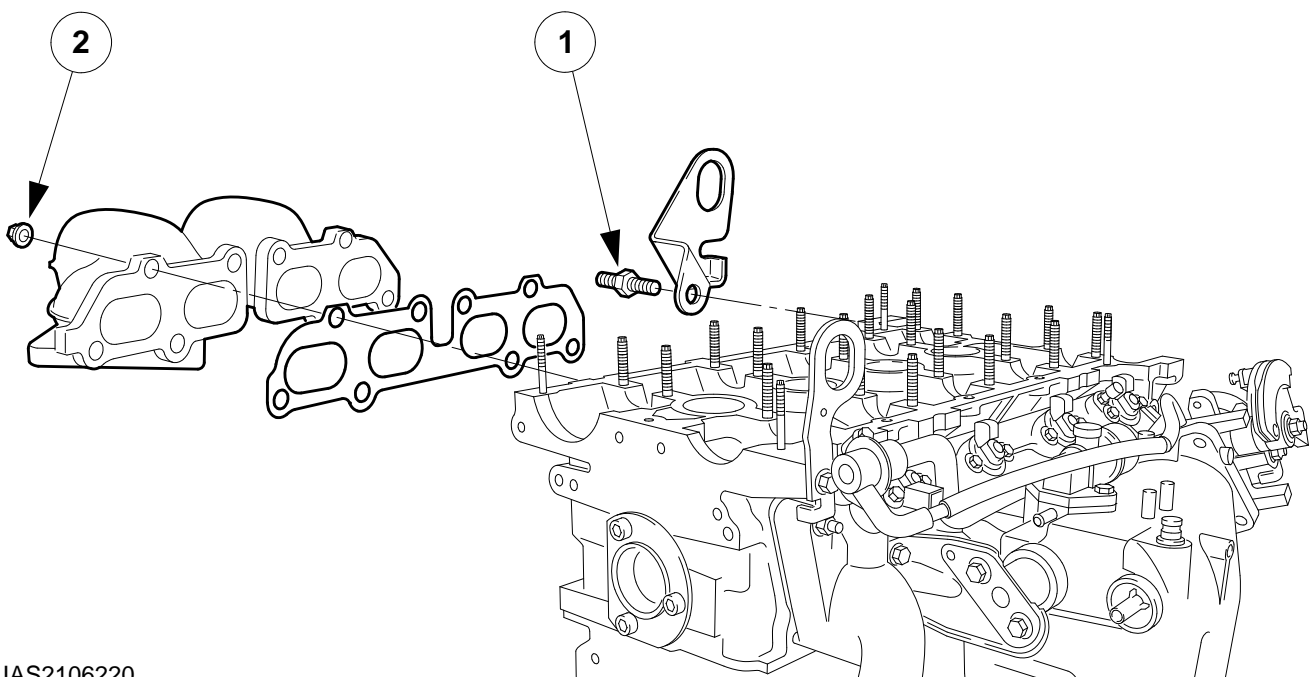
Dismantle



1. Disconnect the engine wiring loom.

- 1 Remove the engine coolant temperature sensor (ECT sensor).
- 2 Disconnect the plug from the idle air control valve (IAC valve).
- 3 Disconnect the plug from the throttle position sensor (TPS).
- 4 Disconnect the plug from the first injector.
- 5 Disconnect the injector rail.

Remove the engine wiring loom.



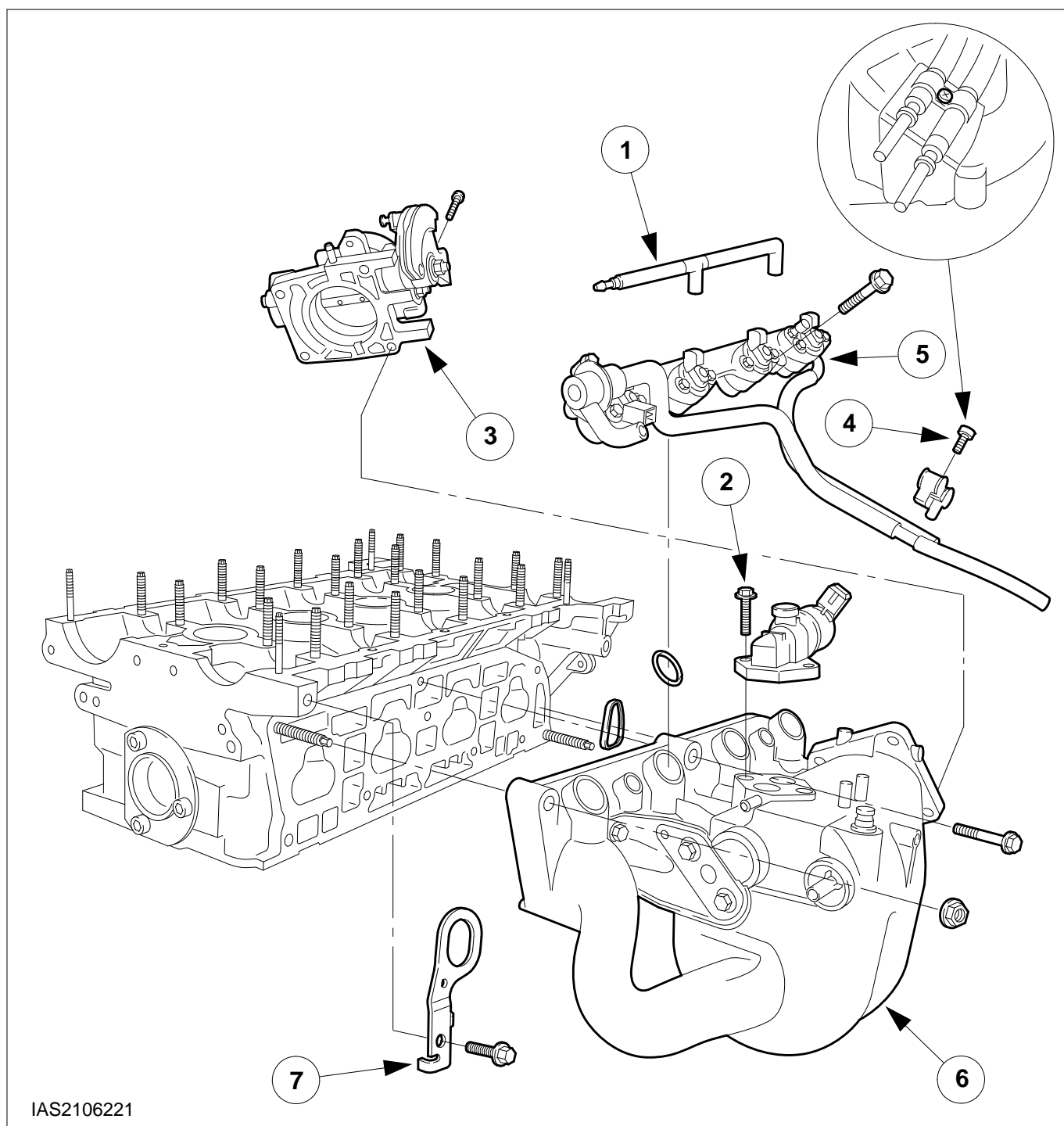
IAS2106220

2. Detach the ancillary components on the left-hand cylinder head side.

1 Engine lifting eye

2 Exhaust manifold

Remove the gasket.



IAS2106221

3. Detach the ancillary components on the right-hand cylinder head side.

- 1 Disconnect the vacuum hose.
- 2 Detach the IAC valve.
- 3 Detach the throttle body (TB).

NOTE: Position and colour markings of the lines.

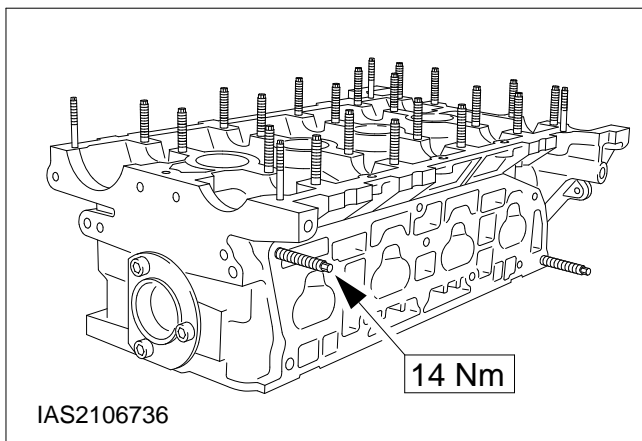
- 4 Detach the fuel line bracket.
- 5 Detach the fuel rail and the injectors.

Remove the gaskets.

- 6 Detach the intake manifold.

Remove the gaskets.

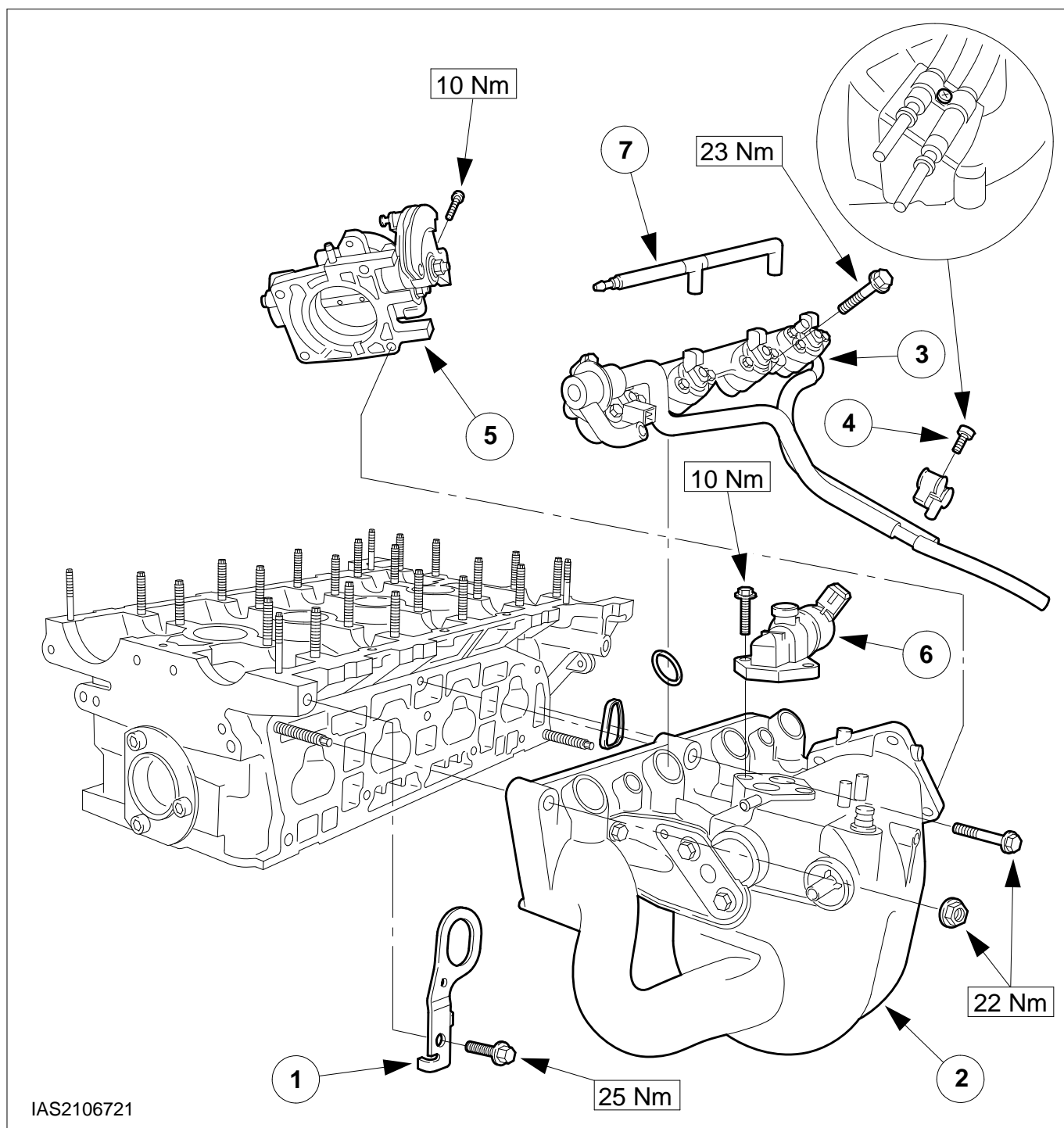
- 7 Detach the engine lifting eye.



Assemble

NOTE: The side coated with microcapsules facing towards the cylinder head.

4. Fit new studs on the cylinder head.

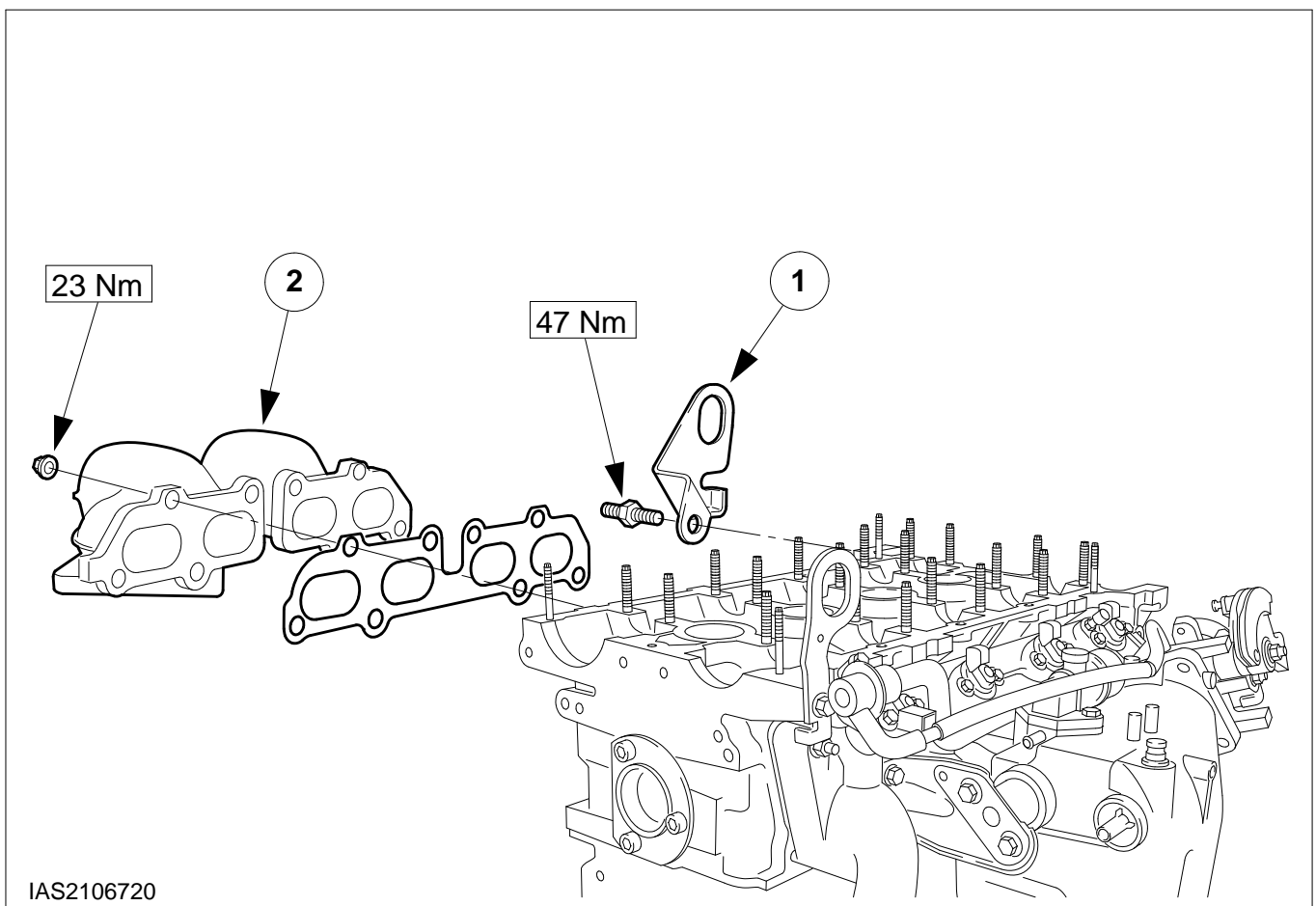


5. Fit the ancillary components on the right-hand cylinder head side.

- 1 Engine lifting eye
- 2 Intake manifold with new gaskets
- 3 Fuel rail with injectors and new gaskets

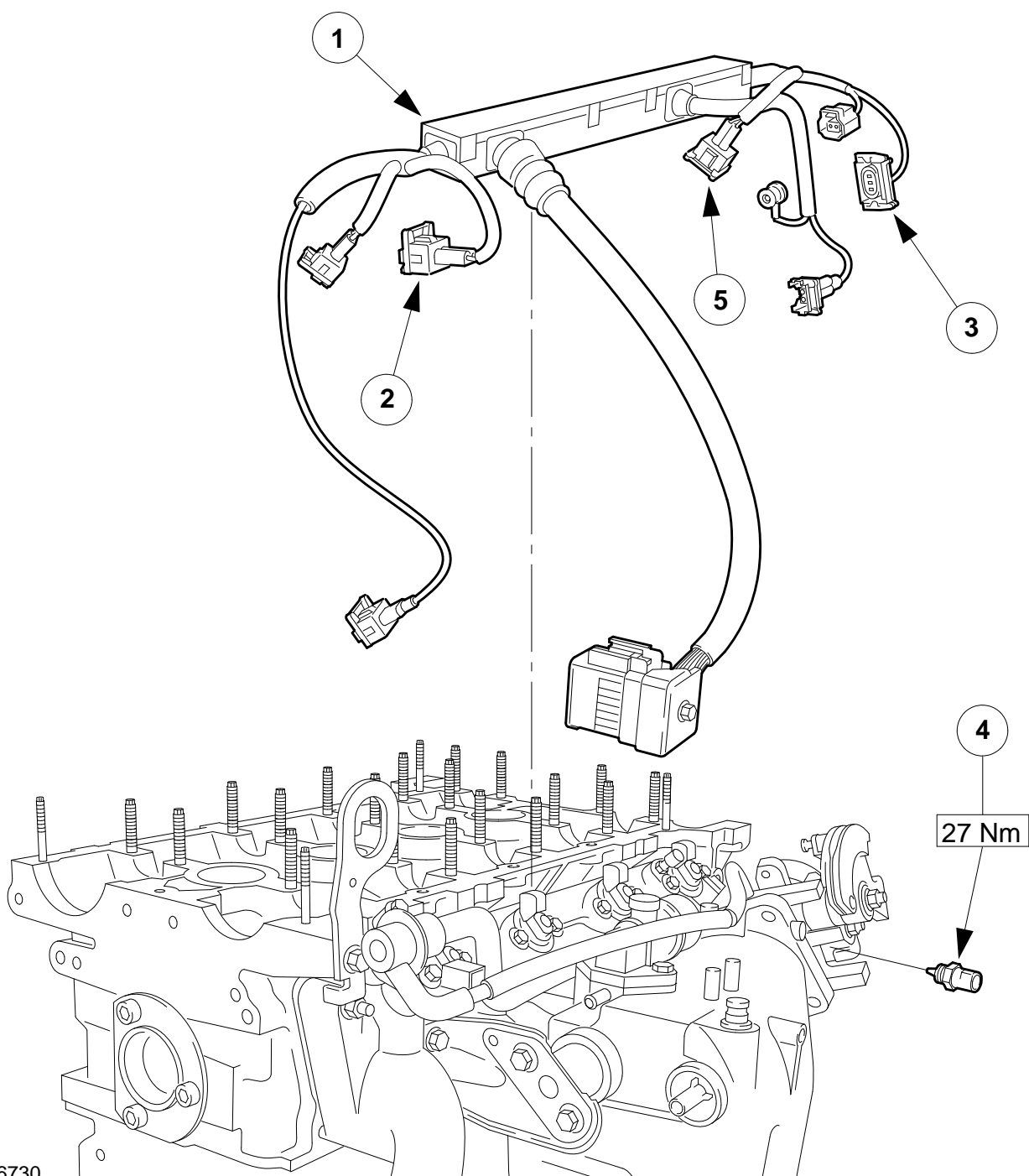
NOTE: Position and colour markings of the lines.

- 4 Fuel line bracket
- 5 Throttle body (TB)
- 6 IAC valve
- 7 Fit the vacuum hose.



6. Fit the ancillary components on the left-hand cylinder head side.

- 1 Engine lifting eye
- 2 Exhaust manifold with new gasket



IAS2106730

7. Connect the engine wiring loom.

- 1 Injector rail
- 2 Plug of the first injector
- 3 TP sensor plug
- 4 Install the ECT sensor.
- 5 Plug of the IAC valve